

DECKS, BALCONIES, PATIOS, PERGOLAS, AND DOCKS

Thanks to thermal treatment, Lunawood products possess several favorable properties. The wood retains its size and shape well, and it has improved decay-resistant and water-repelling properties. Thermally treated wood is a hygienic natural product and safe to use.

Like hardwood, thermo-wood is colored through and through and it is a good insulator of heat and cold, which makes it pleasant to walk on. Lunawood is pitch-free, light-weight, easy to work with and drill into. Being naturally dry and pure, Lunawood is ready for surface-treatment.

Pine in the LunaThermo D category has been designed for use outdoors. It belongs to category 2 in the KOMO certification system, which means it withstands varying weather conditions well. However, it should be surface-treated to protect it from the sun's




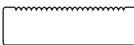
UV rays and impurities in the air. Being chemical-free, the wood can be safely burned or recycled after its long life cycle.

LunaDeck Profix fastening

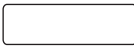


The LunaDeck Profix fastening mechanism allows you to build an impressive deck, patio, balcony or dock exceptionally quickly and easily. Thanks to the T-fastener placed between the boards, assembling the boards is precise and you do not need to break the wood's beautiful surface making holes for screws. The Profix mechanism is no more expensive than other fastening methods because you need only half of the amount of screws and you can use shorter screws with the fasteners.

Wood type: selected pine
Dimensions: 3 m and longer
Thermo-processing categories:
LunaThermo-D



26x68	Lunadeck 1	Pleasingly cozy for glassed-in balconies, for example	
19 and 26x68-92-117-140	SHP		
26x92-117 and 140	Lunadeck 2 Profix	Also available without Profix fasteners	
26x117 and 140	Anti-slip	Available with or without Profix fasteners	

Frame and supporting battens

42x42-68-92-117-140	SHP		
26x68	Parallel batten:	for banisters, fences, footing and decorative lattices	
42x42/28	Slanted batten:	for banisters, fences, footing and decorative lattices	

Other dimensions and profiles are also available upon request as special order.

For more information and instructions for installation and use, please see our website at www.lunawood.fi

Properties of thermo-wood

- Retains its size and shape
- Improved thermal insulation
- Improved resistance to weathering and decay
- Through-and-through coloring in various shades of brown
- Reduced contraction and expansion of the wood due to variation in its moisture content
- Pitch removal from evergreen trees
- Hygienic, preservative-free and environmentally sustainable timber
- Desired amount of breaking and splitting resistance according to the type of treatment



For more information and instructions for installation and use, please see our website at www.lunawood.fi

Oy Lunawood Ltd
Asemantie 52
FI-74170 IISALMI
Telephone: +358 (0)17 770 0200

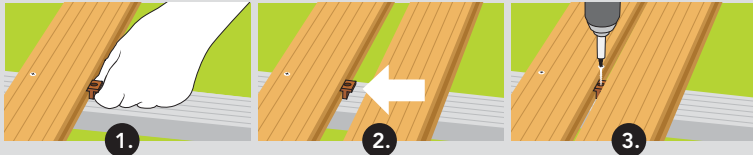
INSTRUCTIONS FOR USE

Storage

We recommend that you store unfinished thermo-wood in a place where it is off the ground and protected from dirt, rain, and sunlight. Thanks to its dimensional stability, thermo-wood boards keep their straight shape during storage and on the construction site.

Fastening

There are clear advantages to fastening your Lunawood deck boards with the patented Profix fastening method. The weather- and impact-proof fasteners are quick and easy to mount. Thanks to concealed fastening, gaps between the boards are even and the result is neat and tidy. The method requires half the screws, the heads of the screws are concealed, and, above all, the boards do not spilt or splinter. If you wish, you can dismantle the structure and move it elsewhere without breaking it.



1. Press the fastener all the way into the groove.
2. Push the next board tightly into the fastener.
3. Screw the fastener tightly.

Mount the first board in a straight line with the heart of it and grooves facing upwards. Firmly screw the first board on from the top of the back edge; you should drill the holes for the screws before you begin screwing them in, or you could use self-drilling screws. The heads of the screws should go no more than 0.5 mm into the surface of the board. Place the fasteners, one at a time, in the middle of each supporting board and press it down into the groove in the board. Subsequent boards can be fastened onto the previous board with the same fastener by putting one half of the fastener on the end of both boards in the middle of the connecting point. Press the next board against the fasteners into the groove and tighten the screws. The butment on the fasteners of the board on the edge, on stairs for example, should be removed to prevent splintering, and the outer board should be screwed on like the first board. You can also use a dummy board for protection. Lunadeck Profix fastening method allows you to put shorter boards to use as well.

Fastening the boards mechanically

Thermo-processing makes wood slightly more susceptible to splitting. For this reason, we recommend that you use self-drilling screws that have few spirals, or drill the holes before you start screwing the boards down to prevent them from splitting. When using nails to fasten the boards, hammer them into pre-drilled holes at an appropriate distance from the end of the board. It is advisable to use a nail punch for the last 2–3 mm. Grooved boards should be fastened into pre-drilled holes from over the top of the tongue such that the screw or thin nail is driven in at an angle of less than 40°. When using a pneumatic nailing machine,

you should adjust the force of impact such that the nails are not driven too deep into the wood. To prevent discoloring and corrosion, we recommend using stainless-steel or acid-proof fasteners in moist or humid places. Zinc-plated and yellow-passivated fasteners are suitable for dry, indoor areas. Galvanised nails are suitable for fastening outdoor cladding if the boards are to be painted after being nailed. Roster dyckert nails are suitable to use.

Color and surface treatment

We recommend that you surface-treat your Lunawood thermal wood. Surface-treatment protects the surface and color of the wood and makes cleaning it easier. Unfinished thermo-wood is also durable, but the color of its surface tends to fade. If necessary, you can restore the wood's original color.

We recommend that you treat your Lunawood with tinted/pigmented wood oil, wax, wood-protecting agent, or glazing paint, which contain a UV protector. The surface-treatment agent should be mixed thoroughly and spread with a paint brush or sponge and the excess agent should be wiped off before it dries. When the color begins to fade, a new coat of surface treatment agent may be applied. We recommend you abide by the manufacturers' instructions for using surface-treatment agents.

We do not recommend using natural vegetable oils to coat Lunawood because they may contain nutrients that cause decay and mold in the wood. Lunawood does not contain such nutrients. However, it is possible that these nutrients seep into the wood as a result of air pollution and for this reason the wood should be protected. Using agents that form a film that does not permeate air should be avoided.

Paint sticks to Lunawood extremely well because of the wood's ability to retain its size and shape in moist conditions. Compared to the surface of ordinary wood, the intervals between repainting are much longer.

WHERE TO USE LUNAWOOD

Creating a sense of cozy warmth, beautiful, chemical-free Lunawood thermo-wood is a durable material for building and can be used both indoors and outdoors. 'Artificially' aged thermo-wood is an excellent choice when you want to create an old, patinated look.

Products in the LunaThermo-D category are suitable for use outdoors. However, they can also be used indoors when you want to create a stylish and impressive interior with dark colors. Products for decks in the LunaThermo-S category can be used outdoors in places covered or roofed.

WORKING WITH LUNAWOOD

Lunawood thermo-wood is easy to work with but it requires a bit more from the tools you use.

Thermo-wood creates warm, dimensionally stable and beautiful structures that look like hardwood for interior decorating and outdoor building.